

Software for Operational Modal Analysis

ARTeMIS



Products ▶ Solutions ▶ Download ▶ Distributors ▶ News ▶ Company ▶

Operating Deflection Shapes of a High Rise Building

In this example time domain Operating Deflection Shapes (ODS) of a 54 storey building in downtown Los Angeles, California are studied.

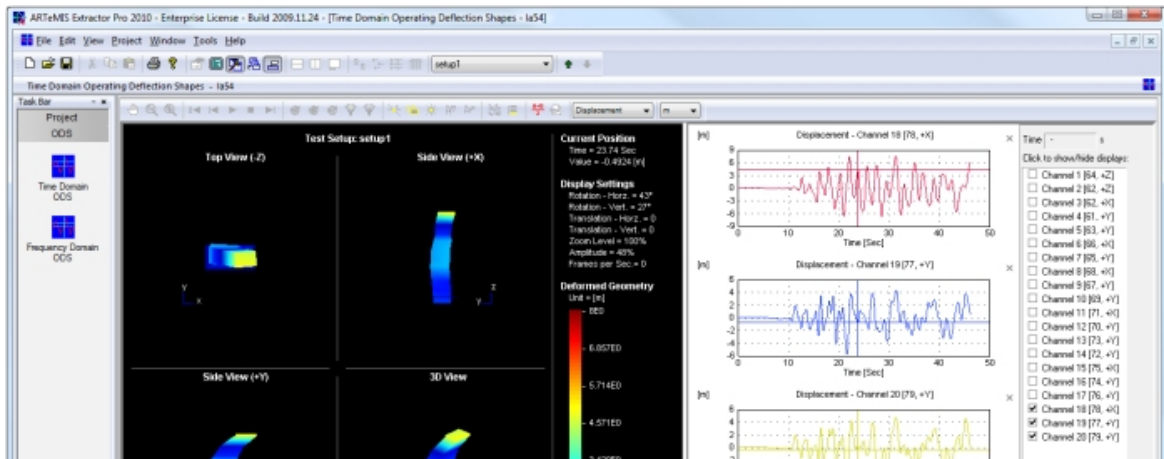


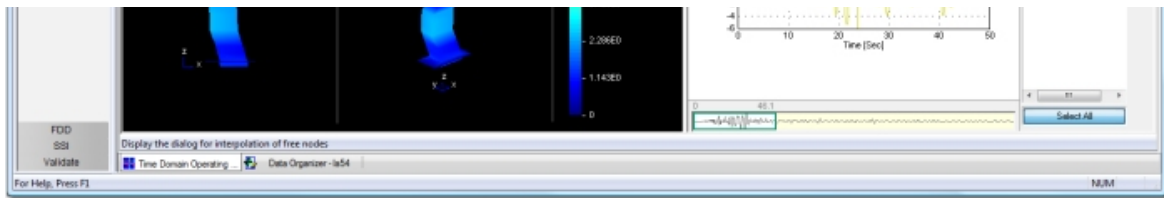
The 54 storey building in LA

The displacement deflection shapes are based on a 20 channel earthquake record a the 1994 Northridge earthquake.

The measurements and the input file has been provided by Professor Carlos Ventura Columbia, Canada.

In the analysis the measured acceleration signals were double integrated and calibrated displacement Time Domain Operating Deflection Shapes. All of this is automatically task of ARTeMIS Extractor Pro.





Here you can download an AVI movie showing part of the recorded event: [Download AVI movie \(28MB\)](#)

Hint: To get the maximum out of the downloaded AVI movie, please set your AVI movie player to "Repeat Forever".

Related Information

C.E. Ventura, B. Laverick, R. Brincker, P. Andersen.

[Comparison of Dynamic Characteristics of Two Instrumented Tall Buildings](#)

Proceedings of the 21st International Modal Analysis Conference (IMAC). Kissimmee, Florida, 2003.

Structural Vibration Solutions A/S • Tel: +45 9635 4422 • Fax: +45 9635 4575 • svibs@svibs.com